

ADMISSIONS

INFORMATION

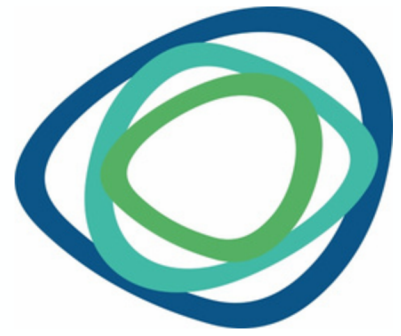




| | |
|-------------------------------------|------------|
| Welcome Message | 3 |
| Vision, Mission & Values | 4 |
| Curriculum Information | 5 |
| Curriculum Intent | 6 |
| Vocational Pathways | 7-9 |
| Additional Pathways | 10 |
| Student Timetable | 11 |
| Admissions Process | 12 |
| Application Form | 13 |

CONTENTS

WELCOME MESSAGE



Wendy Bowyer
Principal

"Welcome to Petty Pool College.

We want to empower young people to discover a world of opportunity, developing the skills they need to achieve endless possibilities.

Through an innovative curriculum and a wealth of wider experiences, we offer exceptional education within an inclusive environment which will help young people to build a strong foundation for life and work.

Our purpose at Petty Pool College is to support young people into meaningful and sustainable employment, equipped with the right skills and beliefs to take their next steps with confidence and enthused by learning! Working with our experienced coaches, young people will be supported into paid work, volunteering or further education."



VISION

Empowering young people to discover a world of opportunity and possibility.

MISSION

To deliver exceptional education, within an inclusive environment, building a strong foundation for life.

VALUES



Brave Ambitious Collaborative Creative

CURRICULUM INFORMATION



Learners will study on one of the pathways below Monday to Thursday. They may switch pathways/ progress from the independence pathway into vocational areas or onto a supported internship. All pathways will be personalised to meet individual aspirations, outcomes and need. Please note that the curriculum and pathways offered may change due to the needs of the intake.

Pathway to Independence

Supported Internships/ LEAP year



Vocational Pathways

Alongside their main pathway, all learners will access curriculum entitlements in the following areas:



CURRICULUM INTENT

At Petty Pool College, our curriculum is designed to empower learners to succeed in their vocational studies, personal growth and future careers, guiding them as they transition into adulthood.

Through our curriculum design and sequencing we facilitate...



VOCATIONAL PATHWAYS



Retail & Customer Service

This pathway has been designed to support learners in developing employability skills to work in the retail and customer service industries.

All learners will experience real working environments when they complete internal work experience in our Railway Shed shop and Little Brew Station café, as well as The Woodlands college shop. External work placements may include Morrisons, Co-op, local markets and other local businesses.

The course will teach learners about health and safety in practical environments, serving food and drink, handling stock, looking after customers in hospitality and retail, teamwork and many other transferrable work-ready skills.



Hospitality & Catering

Our Hospitality and Catering pathway covers various aspects of the industry, including customer service, culinary skills, and event management.

In Hospitality & Catering, learners will develop the skills, knowledge and behaviours to progress into the industry through paid employment, supported employment or volunteering. Students will learn about food preparation, menu planning, hygiene standards, and effective communication with customers. Learners will gain a wide range of skills and will work in the college kitchen preparing food and drinks for the college learners, staff and visitors from the Outdoor Education Centre.

VOCATIONAL PATHWAYS



Digital & Creative Media

Our Digital and Creative Media course is designed to equip learners with the essential skills, knowledge, and behaviours needed to thrive in today's dynamic digital landscape. Whether you're aiming for paid employment, supported employment, or volunteering, this course will help you develop the independence and readiness required for the modern workplace.



State-of-the-Art Digital Suite

Learners will have access to our cutting-edge digital suite, featuring 8 dual-screen PCs. This environment is perfect for honing skills in a variety of areas, including:

- Gamification and Problem Solving
- 3D Printing
- Microsoft Office Packages (M365)
- Adobe - Digital Editing for Marketing
- Artificial Intelligence Platforms
- Basic Hardware Installation
- Digital Communications
- Security Threat, Risk, and Online Safety
- Coding and Web Design
- Exploring Digital Careers

VOCATIONAL PATHWAYS



Digital & Creative Media continued...

Real-World Experience

As part of the course, learners will engage in work experience, tackling live briefs from both internal and external clients. This hands-on approach provides invaluable insight into the digital employment sector, allowing learners to apply their skills using the latest software packages.

Join us to explore the exciting world of digital and creative media and take the first step towards a successful and fulfilling career.



Horticulture & Grounds



In Horticulture and Grounds Maintenance, learners will develop the skills, knowledge and behaviours to progress into paid employment, supported employment or volunteering. These skills help to promote and develop their independence.

On this course, learners gain knowledge about Horticulture, Conservation, and Grounds Maintenance. They run a 60ft greenhouse, large vegetable patch and help maintain our woodlands at Petty Pool.

Learners on this pathway gain both internal and external work placements at employers such as The Joshua Tree, The Hollies and Hartford allotments.

ADDITIONAL PATHWAYS



Pathways To Independence

This non-accredited pathway is designed for those learners who may not yet be ready to progress onto a vocational pathway or whose priority is working towards being independent citizens.

As part of the course, learners focus on their personal development and EHCP outcomes, travel training, independent living, healthy lifestyle and functional/digital skills.

Work placements, enterprise and work experience opportunities are undertaken by all young people as part of the study programme.

Learners on this pathway will develop a wide range of independence and personal skills, knowledge and understanding to support good mental health and well-being in preparation for adulthood.

Supported Internship

Supported internships are a structured study programme based primarily within an employment setting. They enable young people aged 16-24 with an Education, Health and Care plan to achieve sustainable paid employment by equipping them with the skills they need for work, through learning in the workplace.

Supported internships are unpaid and last for a minimum of six months. Wherever possible, they support the young person to move into paid employment at the end of the programme.

The year-long programme is designed to support students with learning difficulties who wish to gain paid employment but require some additional support to do so. The intention is that learners spend most of their time in the workplace, accessing college to develop Functional Skills and specific workplace qualifications if appropriate.



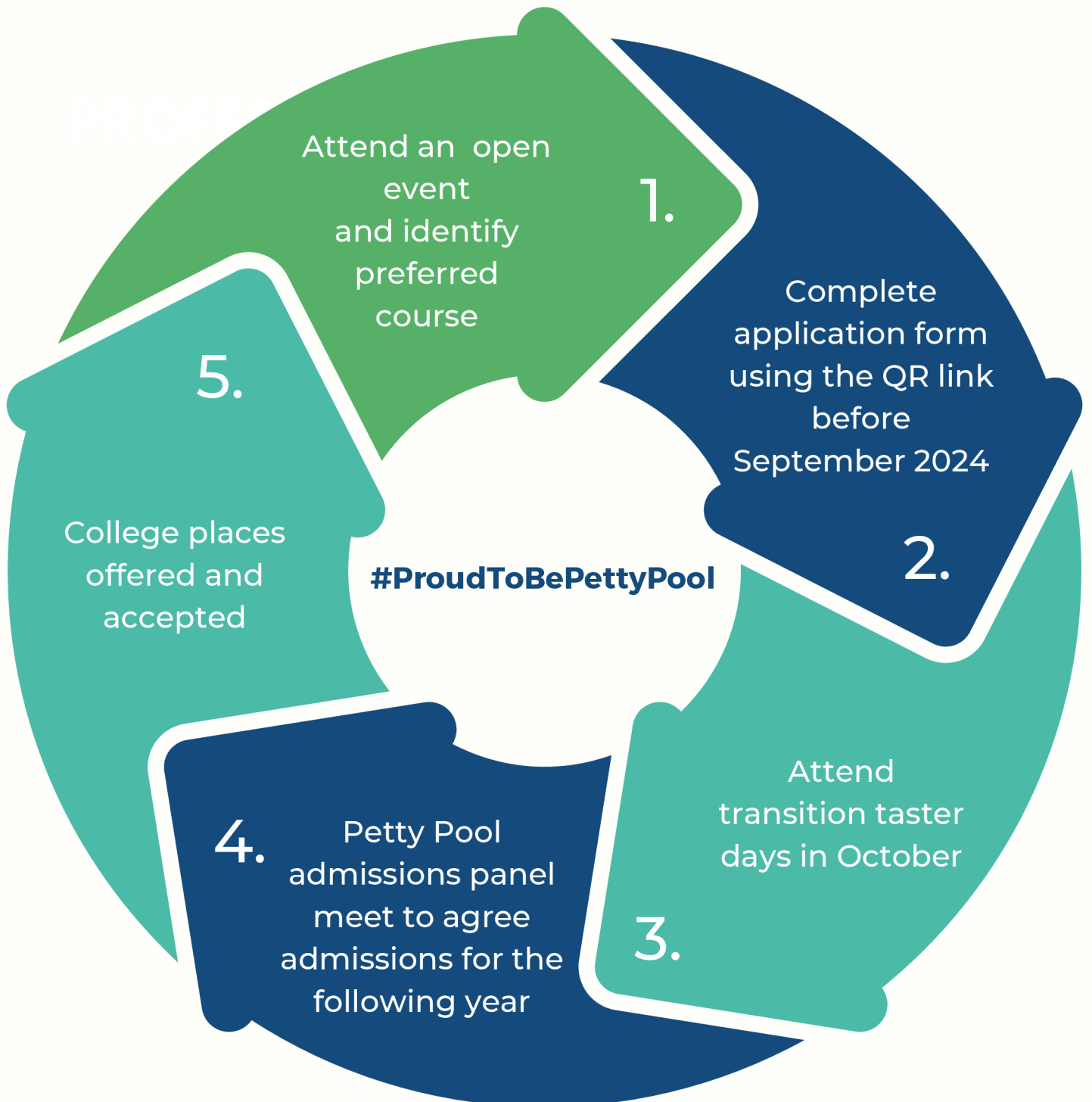
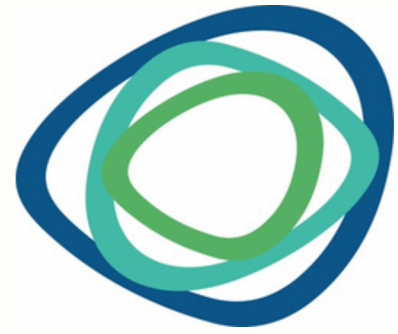
EXAMPLE LEARNER TIMETABLE

| | Session 1 | Break | Session 2 | Lunch | Session 3 | Break | Session 4 |
|-----------|---|-------|--|-------|--|-------|--|
| Monday | Functional Skills Maths G1 09:00 - 10:15 Paul Sage | | Business Enterprise Y2 TBC 10:45 - 12:00 Nicola Ashton | | Healthy Lifestyle H3 12:45 - 14:00 Aaron Sharpes | | Healthy Lifestyle H3 14:15 - 15:30 Aaron Sharpes |
| Tuesday | Business Enterprise Y2 H3 09:00 - 10:15 Nicola Ashton | | Business Enterprise Y2 H3 10:45 - 12:00 Nicola Ashton | | Internal WEX Railway Shed 12:45 - 14:00 Janet Basford | | Internal WEX Railway Shed 14:15 - 15:30 Janet Basford |
| Wednesday | Business Enterprise Y2 H3 09:00 - 10:15 Nicola Ashton | | Business Enterprise Y2 H3 10:45 - 12:00 Nicola Ashton | | Independent Living Flat 1 12:45 - 14:00 Emma Langley | | Independent Living Flat 1 14:15 - 15:30 Emma Langley |
| Thursday | Internal WEX Railway Shed 09:00 - 10:15 Gill Doran | | Tutorial H1 10:45 - 12:00 Lindsey Providence | | Enrichment, Natures & Wellbeing P7 12:45 - 14:00 Charlotte Edwards | | Enrichment, Natures & Wellbeing P7 14:15 - 15:30 Charlotte Edwards |

Vocational hours to include weekly tutorial.

All sessions to embed functional skills, literacy and numeracy, with personalised interventions offered as needed. All sessions to embed digital literacy/skills.

ADMISSIONS PROCESS



APPLICATION **FORM**



This form is also available on our website
www.pettypool.org.uk/college-admissions/

NOTES

NOTES



Petty Pool College

Pool lane,
Sandiway,
Cheshire
CW8 2DR

Tel: 01606 889097

Email: admin@pettypool.co.uk

Web: www.pettypool.org.uk

